



**ROTAREX**  
FIRETEC



CERTIFIED ACCORDING TO  
SPCR 183 / SP METHOD 4912



 **eurofins**  
FA 127

 **COMPACT LINE**

PRE-ENGINEERED SYSTEMS FOR VEHICLE ENGINES

## ROTAREX FIRE SUPPRESSION SYSTEM – MAIN VALUES

- ★ Smallest UNECE-R107 certified water-mist fire suppression system on the market<sup>1</sup>
- ★ Able to protect up to 4m<sup>3</sup> engine compartment with only 4 liters of agent<sup>1</sup>
- ★ Only one cylinder to install, patented dual-chamber technology merges propellant gas and agent into one cylinder
- ★ Operates in any position (horizontally, vertically, upside-down)
- ★ Regulated pressure at discharge to guarantee a more efficient cooling effect
- ★ No re-ignition, no chemicals and fluorine-free
- ★ Easy to refill (no pump or additional equipment required)
- ★ A worldwide trained partner network

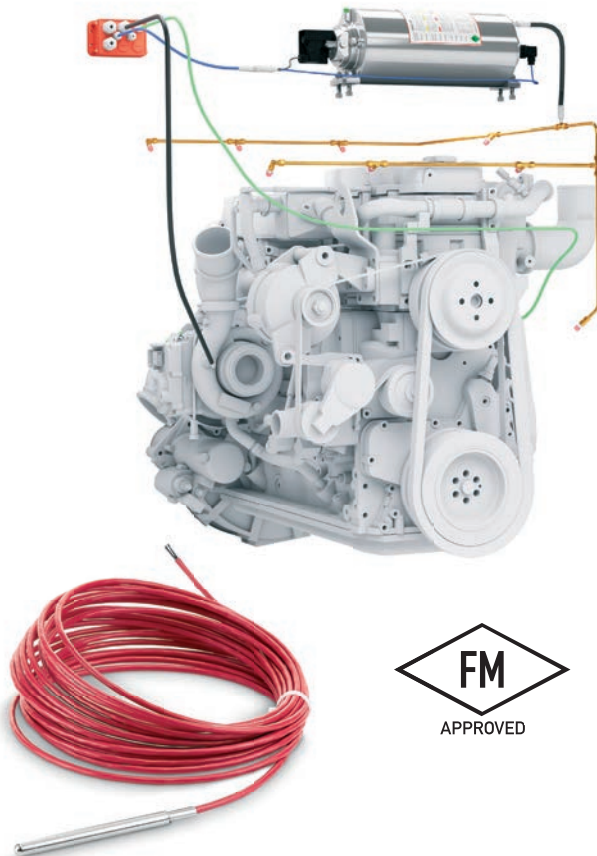
<sup>1</sup> According to UNECE R107 certification



COMPACT LINE® Vehicle Fire System was the first system to be SPCR 183- certified<sup>2</sup>

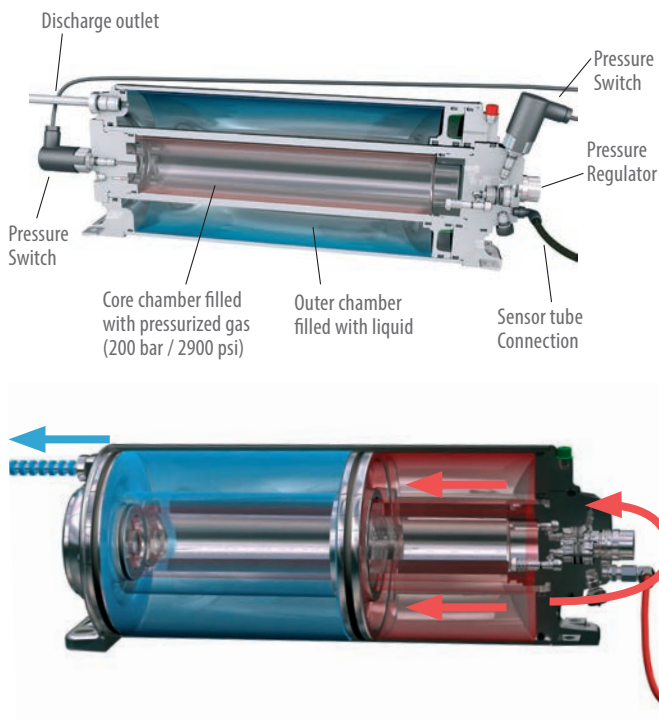
<sup>2</sup> P-MARK only applies to 7L size

## ADVANTAGES OF AN ELECTRONIC DETECTION



- ★ FM-approved Linear Heat Detection Wire (LHD-Wire) withstands extremely high engine compartment temperatures
  - Close to zero limitation in detection length
  - 10 years product life-time
  - High actuation temperature to withstand very hot and narrow engine compartments (180°C)
  - Improved resistance for harsh environments
- ★ Easy to install: fast installation due to wireless communication between the display and the electronic control unit (ECU)
- ★ Low maintenance = Less life cycle costs & less downtime

## PATENTED DUAL-CHAMBER CYLINDER TECHNOLOGY



- ★ Dual-chamber = Extinguishing liquid and pressurized gas are in separate chambers
- ★ When activated, the pressurized gas is released into the outer chamber forcing against a piston
- ★ The piston pushes the liquid out through the discharge line
- ★ A built-in pressure regulator ensures a constant and sustained discharge
- ★ Robust design to withstand vibrations
- ★ Superior safety and leak prevention

### A cylinder for every need :

4L

7L

12L



## A PROVEN-EFFECTIVE AGENT

- ★ Liquid-based agent (water mist) with glycol-free antifreezes
- ★ Long Life Suppression Agent (10 years)
- ★ Low freezing point (-55°C)
- ★ Easy clean-up after discharge/ much less corrosive compared to powder : No chemicals and fluorine-free



## OPTIONAL: WIRELESS COMMUNICATION



Wireless communication between display and electronic control unit. Display can light up in 3 different colors:

- **ACTIVE : OK SIGNAL**  
System is armed and under pressure
  - **CAUTION-WARNING**  
Leakage or electrical issues detected; Maintenance is needed
  - **FIRE : ALARM-DISCHARGE SIGNAL**  
Fire has been detected - System is discharging
- 1 OUTPUT CONNECTION**  
To connect external buzzer

- ★ Easy installation process (no holes to drill, no cables to route)
- ★ Less maintenance due to less electrical components
- ★ Extendable with GSM communication for real-time alerts
- ★ Real-time monitoring and surveillance due to the sensor technology

## ELECTRONIC CONTROL UNIT (ECU)



- ★ Hard-wired version available (mainly for OEM's)
- ★ In case of the event of a fire the information is transmitted to the terminal

Signal type	Wireless	Hard-wired
Power supply	12-48 VDC	12-48 VDC
Ingress protection	IP65	IP65
Inputs	5 (temp. sensor) + 1 (LHD cable)	3 (temp. sensor) + 2 (LHD cable)
Outputs	1	1
T° range	-25°C to 130°C	-25°C to 130°C
Wireless com to the display	Yes	No
Output relays	None	2 (alarm + default)



## COMPACT FIRE SUPPRESSION SYSTEMS FOR VEHICLE ENGINES

---



Buses can catch fire for two main reasons. Electrical faults can cause a fire by creating a short-circuit and the second main reason is the leakage of flammable liquids.

Gasoline is highly flammable and can cause a lot of damage to the bus and its passengers. However, not only fuel can start fires but overloading the generator or overheating oil inside the combustion engine can also lead to a fire.

Our COMPACT LINE® system is a proven and effective fire suppression system suited for any kind of application

Our system detects and suppresses the fire within seconds, preventing major damage to the engine and its surroundings.

The COMPACT LINE® system by Rotarex Firetec is certified to avoid re-ignition. It does not include any kind of chemicals, is free of fluorine and withstands temperatures as low as -55°C.

## THE COMPACT LINE® SYSTEM IS APPROVED BY A WORLDWIDE PARTNER NETWORK

---

We have developed an international network of trained partners that will help finding the best solution for you

**CONTACT US TO FIND YOUR LOCAL SUPPLIER!**

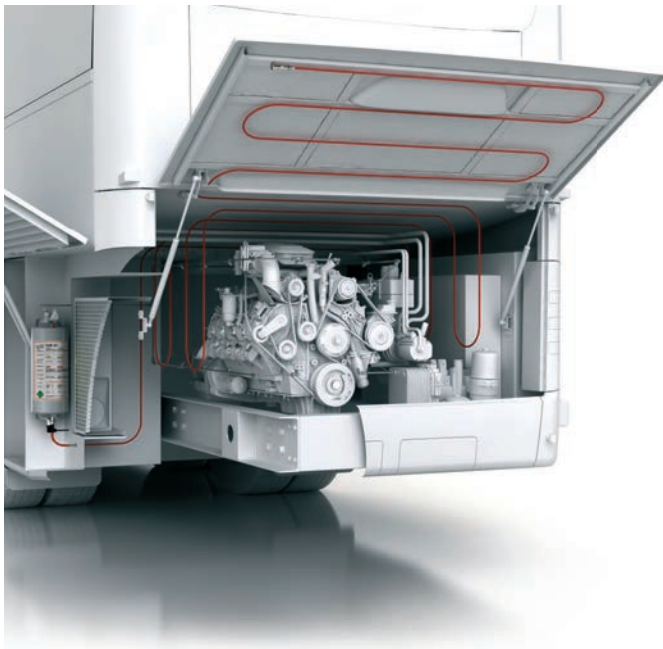


## SENSOR TUBE TECHNOLOGY (ALTERNATIVE TO LHD WIRE)

Rotarex Firetec COMPACT LINE® pneumatic fire suppression systems uses a proprietary continuous linear sensor tube that reliably detects and actuates the release of the extinguishing agent using pneumatic technology and works completely autonomous without an external power source.



## FIREDETEC PNEUMATIC SENSOR TUBE



\*Red tubing for visualization only. System is installed with black tubing.

- ★ 5+ year service lifetime
- ★ Low permeability
- ★ Can withstand high cycle temperatures
- ★ UV and Chemical resistant
- ★ Works autonomous without external power source





## A PROVEN SYSTEM FOR ANY KIND OF ENGINE



### BUSES AND COACHES

Our system is perfectly suited to protect buses and coaches. Once installed, it protects passengers and the environment for at least 10 years without any major maintenance. This reduces downtime while increasing the reliability.



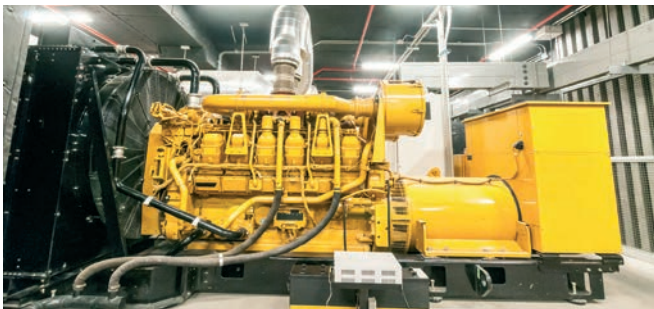
### FORESTRY MACHINES AND OFF-ROAD VEHICLES

These kinds of vehicles operate in the harshest conditions and need a reliable system which not only protects the vehicle and the driver, but also the wildfire-prone environment it works in.



### AIRPORT VEHICLES

Surrounded by highly sensitive equipment and other vehicles such as planes, airport vehicles require a highly reliable fire protection system which detects and suppresses a fire quickly to prevent costly damages.



### POWER GENERATORS

Overheating, a leakage or other hazards can cause power generators to burn. This is not only dangerous because of the toxic gases emitted but also because it can quickly spread to the entire room or building.

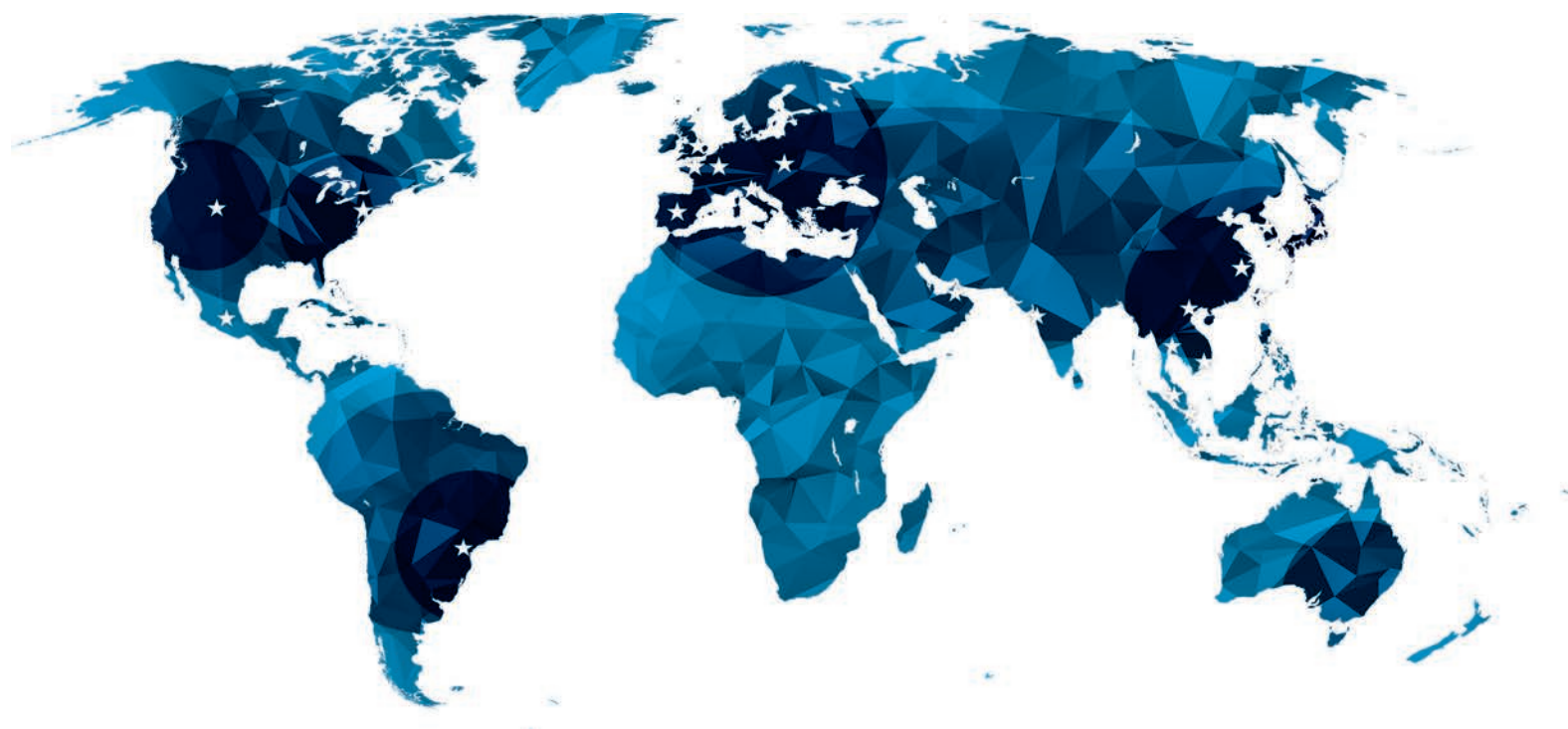


### SPORT BOATS AND OTHER MOTOR VEHICLES

The COMPACT LINE® system can be installed in any kind of combustion engine to protect it and quickly detect and suppress fires, thus, protecting its passengers and surrounding areas with valuable equipment.

## WORLDWIDE HEADQUARTERS

**ROTAREX S.A.**  
24, rue de Diekirch,  
L-7440 Lintgen  
Luxembourg  
Tel.: +352 32 78 32-1  
Fax: +352 32 78 32-854  
E-mail: firetec@rotarex.com



## REGIONAL / COUNTRY HEADQUARTERS

### NORTH AMERICA

**USA**  
Rotarex North America  
Hackettstown  
E-mail: northamerica@rotarex.com

### SOUTH AMERICA

**BRASIL**  
Rotarex Brazil Ltda  
São Paulo  
E-mail: brasil@rotarex.com

### CENTRAL AMERICA

**MEXICO**  
Rotarex Mexico  
Mexico City  
E-mail: mexico@rotarex.com

### EUROPE

#### EUROPEAN HEADQUARTERS

Rotarex S.A. Luxembourg  
24, rue de Diekirch,  
L-7440 Lintgen, Luxembourg  
Tel.: +352 32 78 32-1  
E-mail: firetec@rotarex.com

#### ITALY

Rotarex Italia S.r.l.  
Ciliverghe di Mazzano  
E-mail: italia@rotarex.com

#### SPAIN

Rotarex Spain  
Madrid  
E-mail: spain@rotarex.com

#### FRANCE

Rotarex France  
Paris  
E-mail: france@rotarex.com

#### GERMANY

Rotarex Germany  
Gladenbach  
E-mail: germany@rotarex.com

#### POLAND

Rotarex Polska  
Brzeg  
E-mail: polska@rotarex.com

#### UNITED KINGDOM

Rotarex UK Ltd.  
London  
E-mail: uk@rotarex.com

### ASIA - PACIFIC

#### SINGAPORE

Rotarex Fareast Pte Ltd  
Singapore  
E-mail: fareast@rotarex.com

#### CHINA

Rotarex Star  
Shanghai  
E-mail: china@rotarex.com

#### JAPAN

Rotarex Japan Ltd  
Tokyo  
E-mail: japan@rotarex.com

#### INDIA

Rotarex ENGG. PVT. LTD.  
Mumbai  
E-mail: india@rotarex.com

#### SOUTH KOREA

Rotarex South Korea  
Hwasung-si  
E-mail: korea@rotarex.com

#### THAILAND

Rotarex (Thailand) Co Ltd.  
Pakkret  
E-mail: thailand@rotarex.com

#### TAIWAN

Rotarex Taiwan  
Taipei  
E-mail: info-taiwan@rotarex.com

#### MALAYSIA

Rotarex Malaysia  
Kuala Lumpur  
E-mail: malaysia@rotarex.com

#### PHILIPPINES

Rotarex Philippines  
Manila  
E-mail: philippines@rotarex.com

#### INDONESIA

Rotarex Indonesia  
Jakarta  
E-mail: Indonesia@rotarex.com

#### VIETNAM

Rotarex Vietnam  
Hanoi  
E-mail: vietnam@rotarex.com

### MIDDLE EAST / AFRICA

#### MIDDLE EAST

Rotarex Middle East  
Dubai  
E-mail: middle-east@rotarex.com



For more contact details go to  
[www.rotarexfiretec.com/locations](http://www.rotarexfiretec.com/locations)